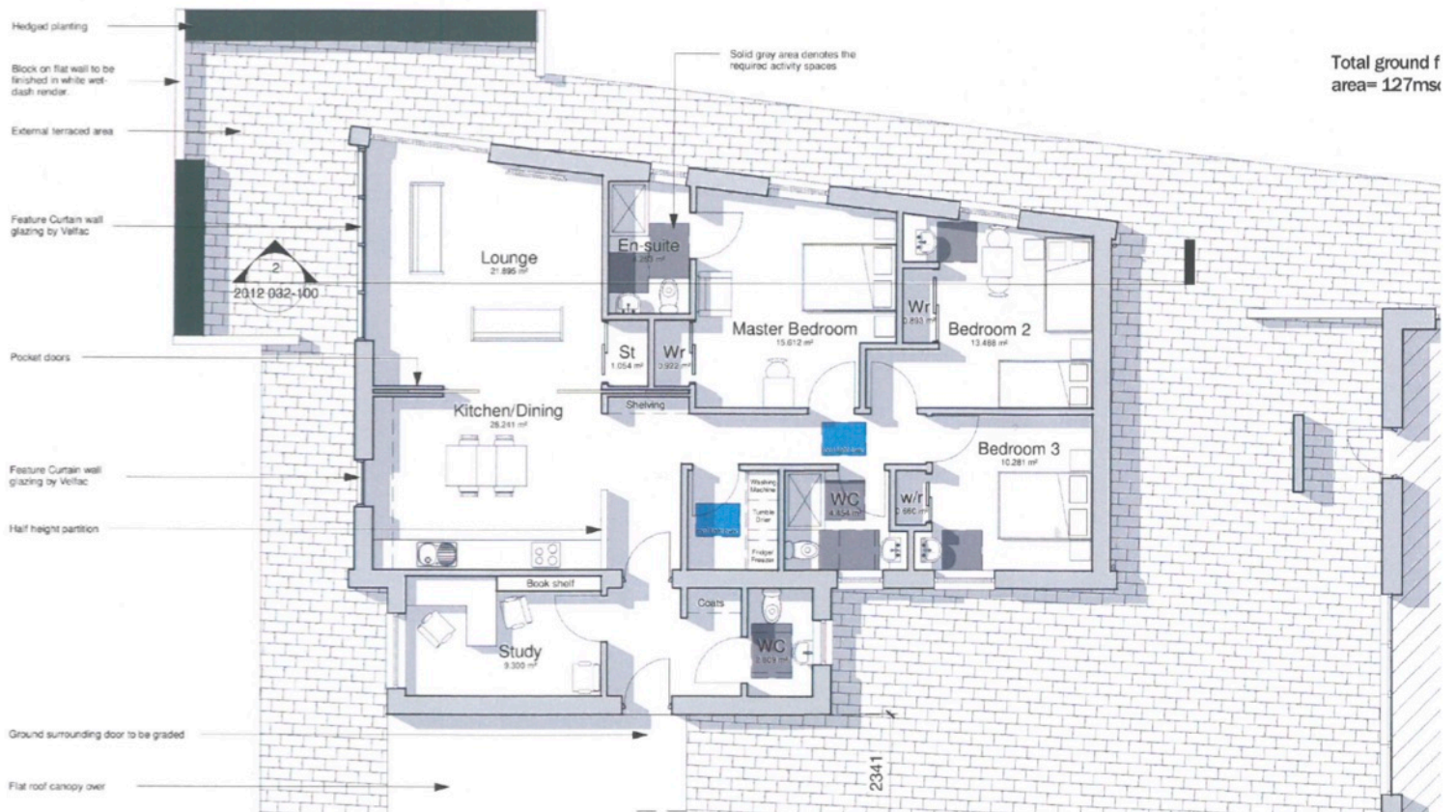


The house comprises a study/office, with utility room and WC opposite; an open-plan kitchen/dining room, leading into the lounge; three bedrooms (two of which are en-suite); and a separate shower room. The design below is an earlier version, but it gives you a good idea of the proposed layout.



Please continue to pray for the successful construction – and completion! – of the presbytery and nursery. It has been a long and stressful process, but we are drawing ever closer to the day when your Parish Priest will actually be living on site. Deo gratias!

Be assured of my fervent prayers for each and every one of you. With grace and blessings for you and your families,

*Fr Domenico.*